

Family planning...?

Please consider having a carrier test for genetic blood disorders

Genetic Blood Disorders

Over 100,000 people in Victoria have inherited an altered globin gene which they could pass on to their children. This may potentially result in a genetic blood disorder, affecting haemoglobin production. Haemoglobin is a protein in the blood that carries oxygen around our bodies.

These inherited blood disorders are passed from parent to child in genes. Genes carry information about human characteristics such as eye colour, hair colour and haemoglobin.

These genetic blood disorders are inherited.

These genetic blood disorders are not contagious.

These genetic blood disorders are not transmitted by germs.

Sometimes changes occur to genes, resulting in medical conditions. The globin genes carry information for individuals to make haemoglobin, however changes in the globin genes can result in the following:

- **Beta thalassaemia major** - a severe anaemia requiring life long treatment, including monthly blood transfusions.
- **Alpha thalassaemia** - one type can be fatal for baby and dangerous for mother during pregnancy.
- **Sickle cell anaemia** - a condition which may require regular blood transfusions. Extremely painful blockages of blood vessels occur throughout life due to changes in the shape of the red blood cells.
- **Haemoglobin E** - usually a benign condition, but if inherited with beta thalassaemia or sickle cell, can result in a severe condition requiring life long treatment.

The health of people who carry an altered globin gene

A person who carries an altered globin gene is termed a 'carrier'. A carrier is **healthy**. It is important that their doctor knows they are a carrier.

What does it mean to be a carrier of an altered globin gene?

If you are a carrier of an altered globin gene it is important that your partner has a blood test to determine his or her carrier status. It is only if you are **both** carriers of certain globin gene alterations that you have a risk of having a child affected with a severe genetic blood disorder.

Reasons for family planning

The genes for these genetic blood disorders are common in people of Mediterranean, Middle Eastern, African (including Caribbean or African American) origin. As well as any Asian countries: India, Pakistan, Sri Lanka, Bangladesh, Indonesia, Philippines, Thailand, Vietnam and China etc. Other origins include Pacific Islands and New Zealand Maoris.

Couples planning to have a family, or where the woman is already pregnant, should consider having a blood test to see if they are a carrier if they were born in or have family (even distant relatives) from any of the areas listed above. This test is needed to determine what chance carriers have of having a child affected by a genetic blood disorder.

Those at risk of having an affected child have options. These conditions can be diagnosed as early as the 12th week of pregnancy. Termination of pregnancy can then be considered, if appropriate. People can adopt or can consider assisted reproductive techniques (such as the use of donor eggs or donor sperm). Others may choose to take the chance of having an affected child. All of these options can be discussed with a Genetic Counsellor.

Testing can be arranged by your local doctor or by contacting the hospitals listed at the end of this pamphlet.

Important information for your family

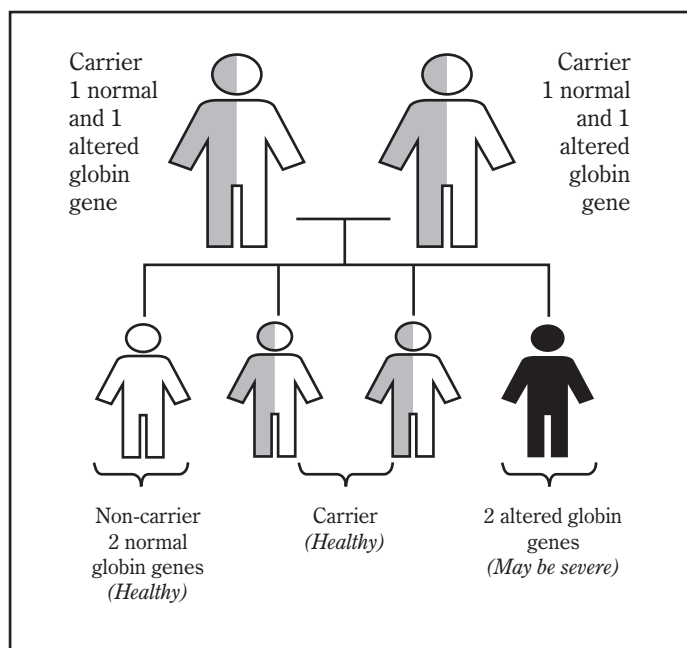
If you or your partner are carriers of an altered globin gene, other members of your families may also be carriers and at risk of having children with a severe blood disorder. It is recommended that all other family members **and** their partners be tested for their carrier status **prior** to having children of their own.

Chances of having a child affected by a genetic blood disorder

Altered genes are passed on from parents to children in the following fashion:

Figure 1:

Both parents are carriers

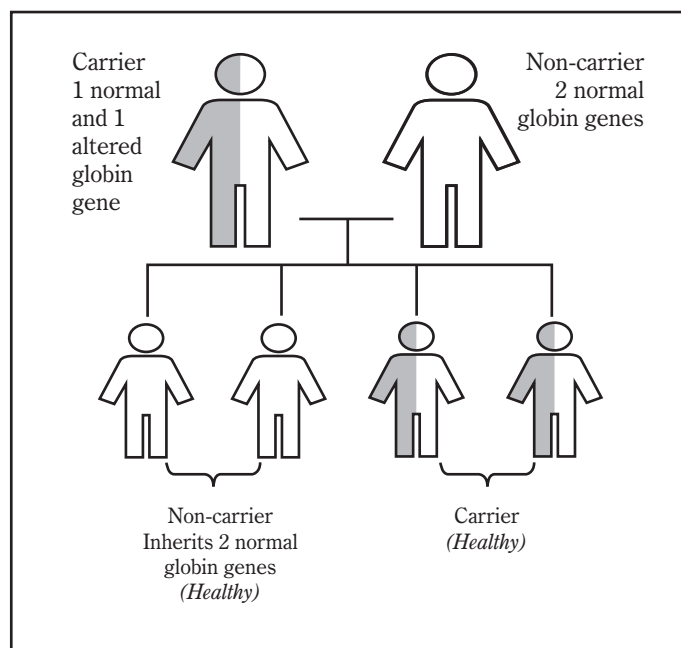


With **each** pregnancy, this couple has a:

- 1 in 4 chance of having a child who inherits 2 normal copies of the globin gene and is a non-carrier.
- 2 in 4 chance of having a healthy carrier, like its parents. This child has one normal copy of the globin gene and one altered copy of the globin gene.
- 1 in 4 chance of having a child which may have a severe genetic blood disorder. This child has inherited 2 altered copies of the globin gene.

Figure 2:

Only one parent is a carrier



With **each** pregnancy, this couple has a:

- 2 in 4 chance of having a child who inherits 2 normal copies of the globin gene and is a non-carrier.
- 2 in 4 chance of having a child who is a healthy carrier - like its parent. This child has one normal copy of the globin gene and one altered copy of the globin gene.

Useful contacts

Treatment Centres:

Mater Adult Hospital

Day Oncology Unit

10 A, Level 10

Raymond Terrace,

South Brisbane, QLD 4101

Phone: +61 7 3163 1952

Fax: + 61 7 3163 3429

Mater Children's Hospital

Medical Day Unit

Level 7 East

Raymond Terrace

South Brisbane, QLD 4101

Day Unit Ph: +61 7 3163 8707

8.30am-5.00pm Wed & Fri ONLY

7 East Ward

Ph: +61 7 3163 8388 or + 61 7 3163 8551

8.30am-5.00pm Mon, Tues,

Thurs, Sat & Sun

www.mater.org.au



Thalassaemia Australia Inc.

333 Waverley Road

Mount Waverley VIC

AUSTRALIA 3149

Phone: +61 3 9888 2211

Fax: +61 3 9888 2150

Email: info@thalassaemia.org.au

Website: www.thalassaemia.org.au