

Thalassaemia Services Victoria

Thalassaemia Services Victoria, based at Southern Health, Monash Medical Centre, Clayton Campus, provides an integrated service, which includes both clinical and diagnostic services. It is a treatment clinic caring for patients with haemoglobinopathies and related blood disorders throughout their lives.

The following services are available at the Thalassaemia Services Victoria:

- Clinical Management , including transfusion services
- Information about haemoglobinopathies
- Genetic counseling
- Diagnostic services that can arrange testing to clarify status for haemoglobinopathies
- Partner testing
- Assessment of risk of severe disease in offspring of couples who are carriers of haemoglobinopathies
- Discussion of prenatal options
- Assistance with decision making
- Arranging prenatal testing
- On site DNA laboratory
- Telephone advice to doctors regarding patient's results and further testing
- Current information about haemoglobinopathies to interested health professionals

Thalassaemia Services is staffed by Dr Don Bowden (Head Thalassaemia Services, Victoria), Joanne Shaw (Thalassaemia Services Coordinator) and Genetic Counseling Services.

The clinic is open:

- (1) For clinical treatment (transfusion) services: Tuesday to Friday, from 7am to 4.30pm; and Saturday from 7am to 2.30pm;
- (2) For clinical appointments: Tuesdays 1.30pm to 3pm; Wednesdays 1.30pm to 4pm; and Thursdays 1.30pm to 4.30pm.
- (3) Urgent appointments will be available outside of these hours by arrangement with Dr Bowden or Coordinator Joanne Shaw ph. (03) 9594 2756.
- (4) Patients can also be seen at short notice, if required.

Copies of test results and a referral letter from the patient's doctor (GP) should be addressed to Dr. Bowden and can be faxed to (03) 9594 6648.

Patient details are also needed to arrange an appropriate appointment.

Thalassaemia Services Victoria

This flow chart was developed to assist with the identification of carriers of haemoglobinopathies for the purpose of genetic counseling, treatment and management (if required).

For more detailed information on haemoglobinopathies either:

(1) Refer to website: www.gpgenetics.edu.au and click on "Haemoglobinopathies"

(2) For hard copy of the information pack call **Thalassaemia Australia Inc.**

Ph: (03) 9888 2211

Email: info@thalassaemia.org.au

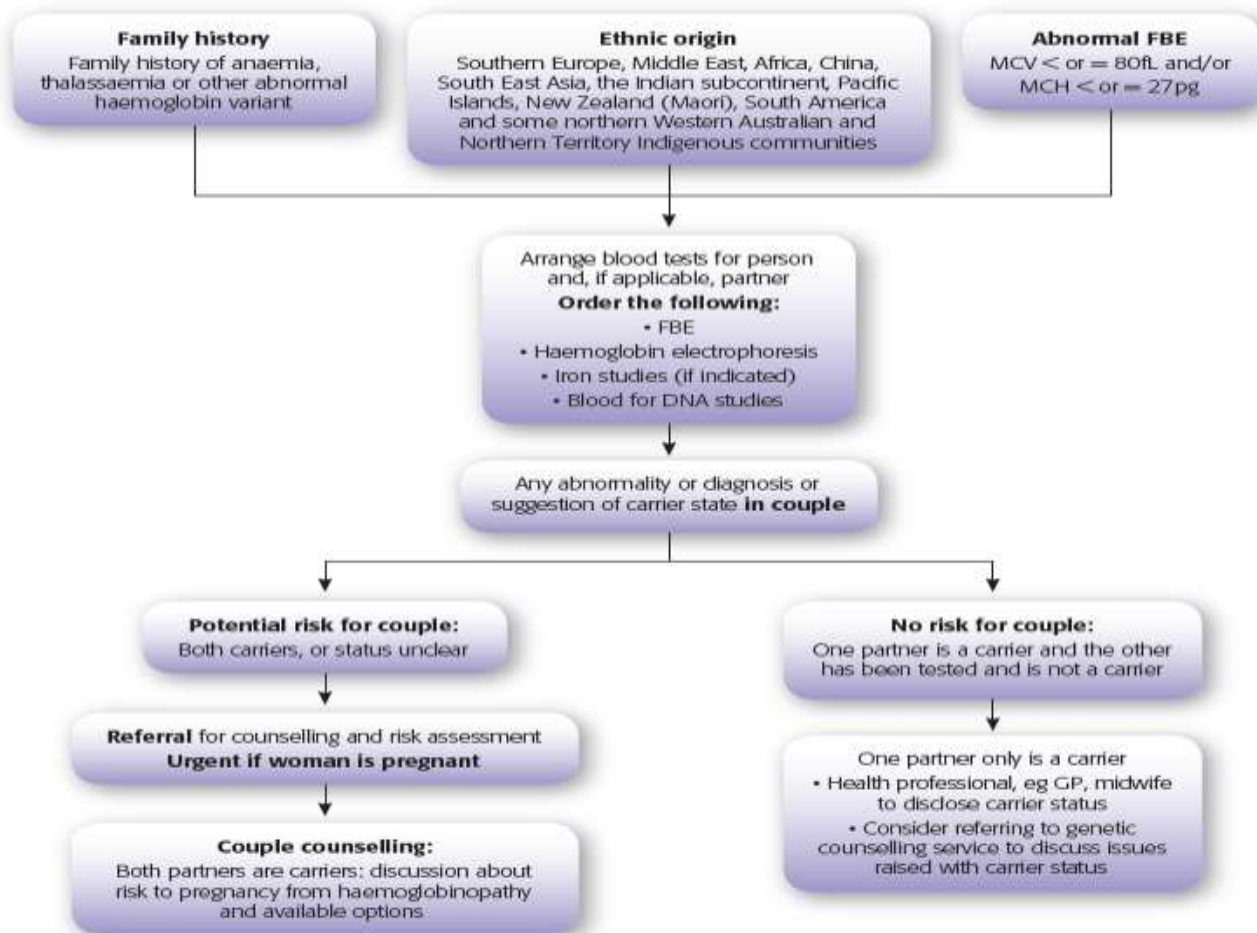
(3) For general clinical and counseling advice call either:

Monash Medical Centre Medical Therapy Unit Ph: (03) 9594 2756 Fax: (03) 9594 6648

Royal Womens Hospital Thalassaemia Clinic Ph: (03) 8345 2180 Fax: (03) 8345 2179

Mercy Hospital for Women Genetics Dept. Ph: (03) 8458 4250 Fax: (03) 8458 4254

Suggested protocol for targeted carrier testing of high risk populations¹ for patients in ANY ONE of the categories below:



¹ Petrou V, Bowden D, 2005. *Suggested protocol for targeted testing of high risk populations*, Medical Therapy Unit, Monash Medical Centre, Victoria, Australia (adapted).